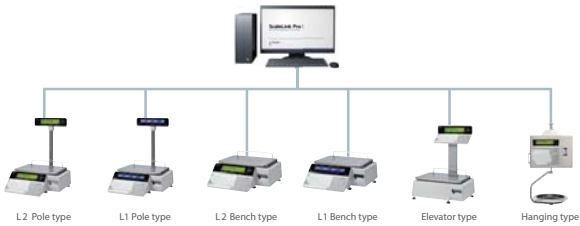


SYSTEM CONFIGURATION

SLP5 is a powerful server/client PLU management Windows based PC software. It completes the UNI-3 series and takes it to new heights. The SLP5 software, the 5th generation of the ScaleLink family software, is freely configurable to make it as simple as possible to the end-user to keep data up-to-date and synchronized on all scales in the system. Supporting mdb or SQL type databases, the GUI is by far one of the most user-friendly software in the retail scale business.



UNI-3 L1 and UNI-3 L2

The UNI-3 model variants are available with two display types: The UNI-3 L1 models, have a blue backlite display with sharp white 16-segment display capable of showing momentarily the PLU name and swap to numeric data; The UNI-3 L2 models, come with a two-line green/orange backlite liquid crystal display, one line dot matrix alphanumeric and one line numeric only.



L2 TYPE DISPLAY



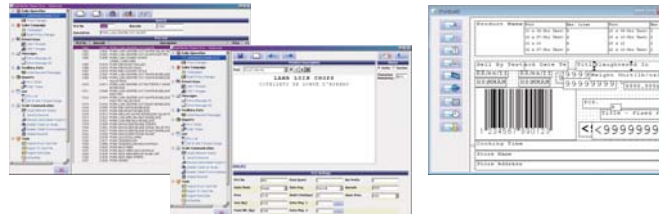
L1 TYPE DISPLAY

SPECIFICATIONS

| | |
|-----------------|---|
| MODEL NAME | UNI-3 series |
| CAPACITY | 6kg/2g, 15kg/5g (Dual Range) 30kg/10g (single Range) * |
| POWER SUPPLY | AC100-240V, 50/60Hz |
| PRINTING SPEED | MAX 100mm/sec |
| LABEL SIZE | W 38 mm to 64mm L 30 mm to 175mm Printing area W 56mm. |
| LABEL ROLL SIZE | Outer diameter Φ 100mm or less Inner diameter Φ 40mm \pm 1mm |
| USE CONDITIONS | Temperature: -5 to 40°C Humidity: 20 to 85% No condensation |
| INPUT/OUTPUT | LAN x 1 USB x 1 Drawer x 1 |

* Except Hanging Type

ScaleLink Pro 5



Please ask your local contact for working condition and licence of Scale Link Pro5.



ISHIDA CO., LTD. www.ishida.com

44,SANNO-CHO, SHOGUN SAKYO-KU,
KYOTO 606-8392 JAPAN
Phone : 81-75-771-4141 Facsimile : 81-75-751-1834



Electronic System Scale Printer

UNI-3

More accurate and faster.



UNI-3

Versatile and vast software functionality all coupled with Ishida's quality and reliability makes the UNI-3 series a must for various retail businesses such as wholesale stores, butcher shops, green groceries and supermarkets.

The UNI-3 series provides the perfect requirements through various model variants and a fully-loaded yet easy and user-friendly software.



ACCURACY AND CONSISTENCY

Accurate weighing and repeatability is fundamental for every customer.

HIGH QUALITY DISPLAY

Bright blue backlight and white 16-segment display or green/orange backlight LCD.

EASY OPERATION

Simple and convenient operation to call up and program a PLU.

HIGH SPEED LABEL AND TICKET PRINT QUALITY

Printing of labels or receipt with pre-set printing speed and thermal head darkness adjustment.

L2 Bench type



CUSTOMER SIDE

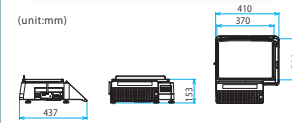
L1 Bench type



CUSTOMER SIDE



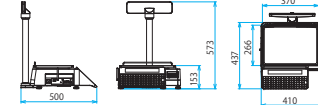
(unit:mm)



L2 Pole type



(unit:mm)



L1 Pole type



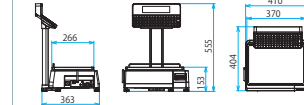
CUSTOMER SIDE

Elevator type



CUSTOMER SIDE

(unit:mm)



Hanging type



(unit:mm)

